

# Beaumont's Birds: Annual Report 2012

Friday 27 December 2013, by [THORNS David](#) (Date first published: 31 December 2012).

## Contents

- [SYSTEMATIC LIST](#)
- [Appendices](#)

120 species were identified this year. The site was visited by one or more birdwatchers on almost every day of the year, although it was subject to rather less coverage than usual in spring and in early October.

During spring and autumn a total of 303 hours of "skywatching" was made (a reduction of 24% compared to 2011). Although spring results were rather disappointing it was nevertheless a good year with 210 raptors noted flying over the park (only 6% fewer than the previous year). A summary of raptor migration may be found at the end of the report (Appendix I).

Two species were recorded for the first time : Little Egret and Goosander. Both were observed flying over the park.

*Observers at Parc des Beaumonts in 2012 :*

AK=Alexis Lamek AL= Alban Larousse CD= Céline Deschamps CF= Corentin Festoc DT= David Thorns GL= Guilhem Lesaffre GM=Gaell Mainguy GP= Guillaume Passy JA= Jacques Anjuener LS= Laurent Spanneut OP= Olivier Laporte PD= Pierre Delbove PM= Philip Redman PR= Pierre Rousset QD= Quentin Dubost RP= Roland Paul RP= Romain Provost PV= Pierre Rivallin SC= Stéphane Chambris VG=Vincent Gilet YD=Yves Dabry YF= Yves Fleury-Collet

## SYSTEMATIC LIST

The status symbols employed are those employed by Pierre Rousset in the original birdlist :

**C** = Captive (escape) **E** = Summer Visitor **F** = Feral

**H** = Winter Visitor **M** = Migrant **S** = Resident

**Great Cormorant** (Grand cormoran) *Phalacrocorax carbo* M

Singles noted in winter on 9<sup>th</sup> January and the 16<sup>th</sup> December [DT].

Recorded regularly in spring from 4<sup>th</sup> February - 16<sup>th</sup> May, with a maximum of 151 on 1<sup>st</sup> April. Almost absent after 22<sup>nd</sup> April.

First reported in autumn (7 birds) on 15<sup>th</sup> August [PR/DT]. Observed regularly in autumn up to 20<sup>th</sup> November, with a maximum of 159 on 22<sup>nd</sup> September [CC,PR/DT].

**Grey Heron** (Héron cendré) *Ardea cinerea* S M

A single bird observed irregularly throughout the year, at the Mare Perchée or perched in the surrounding trees. 2 individuals on site on 16<sup>th</sup> March [DT].

Almost absent at the beginning of the year - observed for the first time on 25<sup>th</sup> January [RP].

Small numbers of 'migrating' birds occasionally noted on skywatches; for example 3 on 20<sup>th</sup> March and 2 on 4<sup>th</sup> May.

On the 19<sup>th</sup> June 3 small flocks (a total of 11 birds) were noted flying high in the sky to the southwest early in the morning [DT].

**Purple Heron** (Héron pourpré) *Ardea purpurea* M

1 record in spring.

1, 11<sup>th</sup> May [DT].

The bird flew high to the northeast early in the morning.

See appendix II.

**Little Egret** (Aigrette Garzette) *Egretta garzetta* M

1, 11<sup>th</sup> November [DT]

The bird was observed flying south in the early afternoon. This constitutes the first record for the park.

**White Stork** (Cigogne blanche) *Ciconia ciconia* M

Observed migrating over the park on 5 dates (3 in spring and 2 in autumn).

11, 5<sup>th</sup> February [DT] - 2, 21<sup>st</sup> March [SC/PR] - 1, 17<sup>th</sup> June [PR/DT].

3, 11<sup>th</sup> August [DT] - 2, 30<sup>th</sup> September [DT].

**Mute Swan** (Cygne tuberculé) *Cygnus olor* M

1 record in late spring.

5, 19<sup>th</sup> June [DT].

**Greylag Goose** (Oie cendrée) *Anser anser* M

Observed on 4 dates (2 in spring and 2 in autumn).

91, 19<sup>th</sup> February [PR/DT] - 15, 20<sup>th</sup> March [DT].

27, 27<sup>th</sup> October [JA/QD/PR/DT] - 25, 28<sup>th</sup> October [PR/DT]

**Canada Goose** (Bernache du Canada) *Branta canadensis* F

Observed flying overhead on 5 dates.

6, 15<sup>th</sup> February [PR] - 2, 4<sup>th</sup> March [PR] - 7, 8<sup>th</sup> March [DT] - 2, 9<sup>th</sup> April [DT] - 6, 8<sup>th</sup> September [DT].

**Ruddy Shelduck** (Tadorne Casarca) *Casarca ferruginea* F

One observation in early spring.

1, 15<sup>th</sup> March [DT].

The bird arrived in flight from the southwest at dawn. It spent several minutes on site, feeding and swimming at the edges of the Mare Perchée before taking off and flying away to the northeast.

See Appendix II.

**Mallard** (Canard colvert) *Anas platyrhynchos* S M

Small numbers seen irregularly throughout the year, although present principally from late January to late June. A pair bred successfully at the Mare Perchée for the fourth consecutive year.

A pair noted on site for the first time on 24<sup>th</sup> January, about 10 days earlier than in 2011 [DT]. Apparently then not observed (absent?) until the 22<sup>nd</sup> February. 'Installed' at the Mare Perchée by the 8<sup>th</sup> March [PR]. During March, as in 2011, frequent battles observed between 2 pairs present: around the 19<sup>th</sup> both males could be seen chasing off the 'opposing' female, as well as engaging in aggressive behaviour with each other [DT].

As was the case last year a group of 4 males also visited the site in spring. On the 5<sup>th</sup> April these birds were present at the Mare Perchée as well as the nesting pair.

Breeding confirmed with the appearance of 10 ducklings on 23<sup>rd</sup> April (3 days later than in 2011). This number was reduced to 6 (27<sup>th</sup> April), 4 (4<sup>th</sup> May), 3 (5<sup>th</sup> May) and 2 (18<sup>th</sup> May). The 2 remaining ducklings were then observed daily until the 17<sup>th</sup> June. Very few observations (almost absent) after the 25<sup>th</sup> June, when one juvenile was present in the company of an adult male and female [PR].

See Appendix II.

**Eurasian Teal** (Sarcelle d'hiver) *Anas crecca* H M

One record in spring.

6, 15<sup>th</sup> March [DT].

The small flock was flushed from the Mare Perchée at dawn, having presumably roosted overnight there. They circled the pond several times before disappearing.

**Goosander** (Harle bièvre) *Mergus merganser* M

One record in early spring.

1, 19<sup>th</sup> February [PR/DT].

The bird flew east along the river valley in the middle of the afternoon. It constitutes the first record for Beaumonts.

**Osprey** (Balbuzard pêcheur) *Pandion haliaetus* M

Recorded on 6 dates (1 in spring and 5 in autumn).

1, 1<sup>st</sup> May [PR].

1, 11<sup>th</sup> August [DT] - 1, 8<sup>th</sup> September [PR/DT] - 1, 23<sup>rd</sup> September [DT] - 1, 29<sup>th</sup> September [DT] - 1, 27<sup>th</sup> October [DT].

See Appendix I & II.

**Red Kite** (Milan royal) *Milvus milvus* M

Observed migrating over the park on 4 dates in autumn.

1, 28<sup>th</sup> September [PR] - 1, 29<sup>th</sup> September [DT] - 1, 21<sup>st</sup> October [DT] - 2, 22<sup>nd</sup> October [OL].

See Appendix I & II.

**Black Kite** (Milan noir) *Milvus migrans* M

Observed on 3 dates in spring.

1, 22<sup>nd</sup> April [DT] - 1, 5<sup>th</sup> May [DT] - 1, 12<sup>th</sup> May [SC/DT].

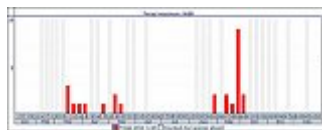
See Appendix I & II

**Marsh Harrier** (Busard des roseaux) *Circus aeruginosus* M

Recorded flying over the park on 16 dates (8 in spring and 8 in autumn). At least 26 birds are involved.

3, 18<sup>th</sup> March [SC] - 1, 21<sup>st</sup> March [SC/PR] - 1, 1<sup>st</sup> April [CF/GL/PR/DT] - 1, 3<sup>rd</sup> April [DT] - 1, 27<sup>th</sup> April [PR] - 1, 12<sup>th</sup> May [SC/PR] - 1, 13<sup>th</sup> May [DT] - 1, 20<sup>th</sup> May [PR].

2, 1<sup>st</sup> September [DT] - 1, 15<sup>th</sup> September [DT] - 1, 16<sup>th</sup> September [DT] - 1, 23<sup>rd</sup> September [SC/QD] - 1, 28<sup>th</sup> September [PR] - 7, 29<sup>th</sup> September [DT/PR] - 1, 30<sup>th</sup> September [DT] - 2, 7<sup>th</sup> October [SC/PR].



See Appendix I & II. .

**Hen Harrier** (Busard Saint-Martin) *Circus cyaneus* M

Recorded on 3 dates in autumn.

1, 22<sup>nd</sup> October [CC/DT] , 1, 29<sup>th</sup> September [PR/DT] - 1, 21<sup>st</sup> October [DT].

See Appendix I & II

**Montagu's Harrier** (Busard cendré) *Circus pygargus* M

1 record in autumn.

1, 16<sup>th</sup> August [PR].

The bird was a juvenile and flew exceptionally low over the park at 14h50. It is possible that the bird may have landed somewhere on site.

See Appendix I.

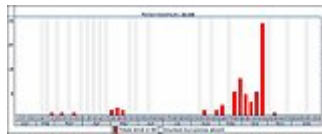
### **Common Buzzard** (Buse variable) *Buteo buteo* M

A very good year in comparison with 2011. Noted on 8 dates in spring and 17 dates in autumn. Exceptionally noted also in winter (1 record in December). At least 101 birds are involved.

1, 22<sup>nd</sup> February - 1, 11<sup>th</sup> March - 1, 21<sup>st</sup> March - 2, 1<sup>st</sup> May - 1, 8<sup>th</sup> March - 1, 12<sup>th</sup> March - 1, 13<sup>th</sup> March - 2, 20<sup>th</sup> March.

2, 19<sup>th</sup> August - 2, 1<sup>st</sup> September - 4, 8<sup>th</sup> September - 4, 22<sup>nd</sup> September - 5, 23<sup>rd</sup> September - 2, 28<sup>th</sup> September - 4, 29<sup>th</sup> September - 8, 30<sup>th</sup> September - 8, 7<sup>th</sup> October - 5, 12<sup>th</sup> October - 9, 21<sup>st</sup> October - 2, 22<sup>nd</sup> October - 2, 23<sup>rd</sup> October - 1, 25<sup>th</sup> October - 10, 27<sup>th</sup> October - 21, 28<sup>th</sup> October - 1, 6<sup>th</sup> November.

1, 2<sup>nd</sup> December [DT].



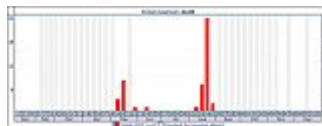
See Appendix I & II

### **Honey-Buzzard** (Bondrée apivore) *Pernis apivorus* M

Observed migrating over the park on 12 dates (4 in spring and 8 in autumn). At least 48 birds are involved.

3, 12<sup>th</sup> May [SC/PR/DT] - 8, 20<sup>th</sup> May [PR/DT] - 1, 2<sup>nd</sup> June [SC/DT] - 1, 17<sup>th</sup> June [DT].

1, 11<sup>th</sup> August [DT] - 2, 18<sup>th</sup> August [PR/DT] - 6, 19<sup>th</sup> August [DT] - 1, 23<sup>rd</sup> August [PM] - 5, 25<sup>th</sup> August [DT] - 18, 26<sup>th</sup> August [PR/DT] - 1, 1<sup>st</sup> September [PR/DT] - 1, 2<sup>nd</sup> September [PR/DT].



See Appendix I & II.

### **[Unidentified larger raptors]** (Grands rapaces non identifié)

Unidentified larger raptors reported on 14 dates.

17 individuals are involved (6 in spring and 8 in autumn).

See Appendix I.

**Eurasian Sparrowhawk** (Epervier d'Europe) *Accipiter nisus* S

Regularly recorded (usually 1-3 individuals) throughout the year. Breeding confirmed for a sixth consecutive year in the woodland bordering the Parc Mabilley with begging calls from juveniles heard in this area at the end of July and early August (as was the case in 2007-2011).

Juveniles noted for the first time on 20<sup>th</sup> July (the same date as last year) flying around the Bois de Bordure [YC].

In spring and (especially) autumn small numbers of migrating birds occasionally noted on skywatches, (observed on 9 dates in autumn between the 23<sup>rd</sup> August - 10<sup>th</sup> November, with a maximum of 3 on 21<sup>st</sup> October).

**Eurasian Kestrel** (Faucon crécerelle) *Falco tinnunculus* S M

Breeding in the immediate vicinity of the park, 1-3 birds (usually 1) noted almost daily.

Although the vast majority of sightings refer to local birds, some were apparently in active migration (ex: 1, 16<sup>th</sup> March and 2, 21<sup>st</sup> October [DT]).

**Eurasian Hobby** (Faucon hobereau) *Falco subbuteo* E M

Up to 3 birds noted occasionally in spring, summer and autumn.

Noted rather less frequently this year compared to 2011 (16 observations in total). As usual, birds noted hunting hirundines together high above and around the park at the end of August (2 on 26<sup>th</sup> [DT]).

First recorded in spring on 29<sup>th</sup> April [DT] - last autumn sighting on 16<sup>th</sup> September [PR].

**Peregrine Falcon** (Faucon pèlerin) *Falco peregrinus* R M

The regular presence of 2 birds at the nearby Porte d'Ivry (94) has made the species less of a rarity. Recorded on 6 dates (far fewer than in 2011).

1, 19<sup>th</sup> February [PR/DT] - 1, 22<sup>nd</sup> February [PR] - 1, 18<sup>th</sup> March [SC/PR/DT] - 1, 15<sup>th</sup> May [DT] - 1, 16<sup>th</sup> August [PR] - 1, 28<sup>th</sup> September [PR].

**Merlin** (Faucon émerillon) *Falco columbarius* M

2 records in autumn.

1, 21<sup>st</sup> October [DT] - 1, 27<sup>th</sup> October [DT].

As usual, the observations were of birds in active migration, flying quickly and purposefully to the southwest.

**Common Moorhen** (Poule d'eau) *Gallinula chloropus* S

A familiar resident breeding species with 1-9 birds observed almost daily throughout the year.

Breeding confirmed at the Mare de Brie and the Mare Perchée, a pair at each location producing

two broods. Copulation observed at the Mare Perchée in the early morning of 19<sup>th</sup> April [DT]. A chick observed for the first time there on 27<sup>th</sup> April [PR], and at the Mare de Brie on 5<sup>th</sup> May [DT].

Confirmation of second broods at each location with two chicks at the Mare de Brie and one at the Mare Perchée on 17<sup>th</sup> June [DT].

It is highly probable that the healthy population of rats at the Mare Perchée is responsible for the loss of several young birds.

**Northern Lapwing** (Vanneau huppé) *Vanellus vanellus* H M

Seen flying over the park in small groups on 4 dates in autumn.

125, 7<sup>th</sup> October [PR] - 240+, 21<sup>st</sup> October [DT] - 2, 1<sup>st</sup> November [DT] - 1, 10<sup>th</sup> November [DT].

**Common Sandpiper** (Chevalier guignette) *Actitis hypoleucos* M

1 record in spring.

1, 4<sup>th</sup> May [DT].

**Green Sandpiper** (Chevalier cul-blanc) *Tringa ochropus* M

Observed on 4 occasions (3 in spring and 1 in autumn).

1, 3<sup>rd</sup> April [DT] - 1, 4<sup>th</sup> April [DT] - 1, 3<sup>rd</sup> May [DT].

1, 25<sup>th</sup> July [DT].

**Eurasian Woodcock** (Bécasse des bois) *Scolopax rusticola* M H

Observed on 2 dates in spring.

1, 13<sup>th</sup> March [DT] - 1, 9<sup>th</sup> April [DT].

**Common Snipe** (Bécassine des marais) *Gallinago gallinago* M

One observation in spring.

1, 13<sup>th</sup> March [DT].

The bird flew northwards over the park early in the morning.

**Black-headed Gull** (Mouette rieuse) *Larus ridibundus* S M

Low numbers (generally 1-10 birds) observed flying over the park fairly regularly in winter, early spring and autumn. Uncommon and irregular from late April to mid-September.

Larger numbers sometimes noted in winter, particularly February, with a maximum of 161 on the 19<sup>th</sup> February [PR/DT]. In March (up until the 21<sup>st</sup>), small groups noted flying northwards in the early mornings [DT].

Occasionally noted landing on site; for example, at the Mare Perchee on 31<sup>st</sup> October [DT], and on a lamp post inside the Tip on 6<sup>th</sup> February [PR].

**Mediterranean Gull** (Mouette mélanocéphale) *Larus melanocephalus* M

Observed migrating over the park on 2 dates in spring.

1, 8<sup>th</sup> March [PR] - 3, 5<sup>th</sup> May [DT].

**Common Gull** (Goéland cendré) *Larus canus* S M

Rather uncommon in all seasons - noted on 5 dates.

1, 1<sup>st</sup> January [PR/DT] - 1, 7<sup>th</sup> February [PR] - 1, 12<sup>th</sup> February [DT] - 3, 19<sup>th</sup> February [PR/DT].

1, 12<sup>th</sup> July [DT].

**Herring Gull** (Goéland argenté) *Larus argentatus* S M

Small numbers seen regularly (usually 1-2 birds) in winter, spring and autumn.

Recorded especially in February and March when greater numbers sometimes noted (for example, a group of 20 flying west on 9<sup>th</sup> March [DT]).

Rather uncommon and irregular after the third week in March.

**Yellow-legged Gull** (Goéland leucophaea) *Larus michahellis* H M

Observed less frequently than the preceding species, and there were fewer records compared to 2011. Noted on 8 dates (6 in spring and 2 in autumn).

1, 2<sup>nd</sup> February [PR] - 1, 12<sup>th</sup> February [DT] - 2, 4<sup>th</sup> April [DT] - 7, 8<sup>th</sup> April [DT] - 1, 21<sup>st</sup> April [PR/DT] - 6, 27<sup>th</sup> April [PR].

6, 23<sup>rd</sup> September [SC/QD/DT] - 4, 27<sup>th</sup> October [JA/PR/DT].

**Lesser Black-backed Gull** (Goéland brun) *Larus fuscus* S M

Relatively common - reported in small numbers in winter, spring and autumn.

A maximum of 13 noted on 27<sup>th</sup> October [DT]. Not recorded during June and July.

**[Unidentified larger gulls]** (Goéland indéterminé) *Larus spp*

Unidentified larger gulls regularly noted in small numbers in winter, spring and autumn. Occasionally larger groups noted (ex: 27 on 29<sup>th</sup> February [DT]).

**Common Tern** (Sterne pierregarin) *Sterna hirundo* M

One record in spring.

1 flying south on 9<sup>th</sup> April [DT].

See Appendix II.

**Rock Dove** (Pigeon biset) *Columba livia* S



Common resident – seen daily.

**Stock Dove** (Pigeon colombin) *Columba oenas* S M

A reasonably common non-breeding resident. Observed fairly regularly flying over the park throughout the year in low numbers (usually 1-3 birds). Up to 3 birds observed perched on buildings to the north-east (and outside) of the park where breeding is suspected.

As usual small groups sometimes noted flying eastwards in spring. Display-flights noted occasionally inside the park in spring: for example on the 8<sup>th</sup> and 17<sup>th</sup> March and the 27<sup>th</sup> August [DT].

**Common Wood-Pigeon** (Pigeon ramier) *Columba palumbus* S M

Common breeding resident – seen daily.

Small numbers on site supplemented by local movements of birds flying over the park in diverse directions. Many large groups flying northeast during the early mornings in August and September [DT].

Post breeding (from the end of June) groups comprising adults and juveniles regularly noted on the lawns in the northern section of the park.

Flocks on migration noted occasionally, for example: 90, 9<sup>th</sup> March [PR] – 110, 27<sup>th</sup> October [JA/QD/PR/DT] – 180, 6<sup>th</sup> November [PR].

**Eurasian Collared-Dove** (Tourterelle turque) *Streptopelia decaocto* S

Fairly common resident. 1-2 birds regularly observed in flight or (rarely) perched in trees at the Mare Perchée or inside the re-cycling plant.

**Turtle Dove** (Tourterelle des bois) *Streptopelia turtur* M

Uncommon migrant. Recorded on 4 dates (3 in spring and 1 in autumn).

2, 1<sup>st</sup> May [DT] - 1, 10<sup>th</sup> May [DT] - 1, 15<sup>th</sup> May [DT].

1, 9<sup>th</sup> August [DT].

Since s.turtur is only very rarely observed landing on site, the observation on 15<sup>th</sup> May was particularly interesting: the bird was found singing from a tree close to the Cascade in the early morning (see Appendix II).

**Tawny Owl** (Chouette hulotte) *Strix aluco* S M

Heard several times in summer (July and August), generally between 04h00-05h00 [YF].

**Common Swift** (Martinet noir) *Apus apus* E M

A common summer visitor, seen daily.

Noted for the first time on 13<sup>th</sup> April [DT]. Last recorded on 8<sup>th</sup> September [PR/DT].

Generally fewer birds than usual noted this year. First notable influx (c60 birds) on 27<sup>th</sup> April [PR]. Noted apparently breeding at a building close by, on rue Galilee, on 19<sup>th</sup> June [DT].

Small groups of migrants noted flying south (100+) on 1<sup>st</sup> August [DT].

Less frequently observed after the third week of August. Last observation (29 birds) on 8<sup>th</sup> September [PR/DT].

See Appendix II.

**Rose-ringed Parakeet** (Perruche à collier) *Psittacula krameri* F

Reasonably common non-breeding species. Single birds and/or small flocks seen or heard irregularly throughout the year flying noisily over the park, most often towards the northeast.

Apparently absent at the beginning of the year – first recorded on 2<sup>nd</sup> March [PR]. No records in June or July. Maximum of 17 birds on 30<sup>th</sup> September [DT]. Although noted very occasionally landing on site (for example on the 16<sup>th</sup> March [DT]), this behaviour remains relatively rare.

**Cockateil** (Calopsitte élégante) *Nymphicus Hollandicus* C

1 observation in spring.

1, 22<sup>nd</sup> May [OL].

**Green Woodpecker** (Pic vert) *Picus viridis* S

At least one resident breeding pair in or around the park – seen or heard almost daily throughout the year.

At least 1 juvenile observed during the late summer and autumn (first noted on 12<sup>th</sup> July [DT]).

**Great Spotted Woodpecker** (Pic épeiche) *Dendrocopos major* S

At least one resident breeding pair in or around the park – seen or heard almost daily throughout the year.

**Lesser Spotted Woodpecker** (Pic épeichette) *Dendrocopos minor* S

A discreet and rather uncommon resident. 1-2 birds observed irregularly throughout the year.

Observed drumming in the Parc Mabille on 29<sup>th</sup> January [DT].

Breeding confirmed by an individual carrying food, and flying repeatedly over the Cascade (roughly 3 times per hour), on 7 consecutive days from 7<sup>th</sup>-13<sup>th</sup> May [QD/PR/DT].

**Eurasian Wryneck** (Torcol) *Jynx torquilla* M

1 record in spring.

1, 29<sup>th</sup> April [DT].

Voir Appendix II.

**Eurasian Skylark** (Alouette des champs) *Alauda arvensis* M

Reasonably common passage migrant in spring and autumn, seen or heard flying high over the park.

Noted for the first time in spring on 19<sup>th</sup> February [DT]. Observed thereafter on 8 dates up to 16<sup>th</sup> March, with a maximum of 23 on 4<sup>th</sup> March [SC/PR/DT].

First appearance in autumn on 19<sup>th</sup> October [OL]. Noted thereafter on 7 dates up to 5<sup>th</sup> November [JA], with a maximum of 172 on 19<sup>th</sup> October [OL].

**Woodlark** (Alouette lulu) *Lullula arborea* M

A regular but uncommon passage migrant.

Observed on only 1 date (in autumn) this year. The birds flew, unusually, towards the south-east.

3, 21<sup>st</sup> October [DT].

**Bank Swallow** (Hirondelle de rivage) *Riparia riparia* E M

Rather uncommon but regular passage migrant in spring and autumn.

Fewer observations in comparison with 2011. Noted on 4 dates (1 in spring, 1 in summer and 2 in autumn).

1, 13<sup>th</sup> May [DT] - 1, 12<sup>th</sup> July [DT] - 2, 12<sup>th</sup> August [DT] - 1, 19<sup>th</sup> August [DT].

**Barn Swallow** (Hirondelle de cheminée) *Hirundo rustica* E M

Common passage migrant in spring and autumn. Almost absent in summer (June-July).

First recorded in spring on 1<sup>st</sup> April [CF/GL/PR/DT]. Spring migrants noted in small numbers almost daily up to 20<sup>th</sup> May with a peak of 19 on 28<sup>th</sup> April.

Autumn migrants noted regularly from 11<sup>th</sup> August - 11<sup>th</sup> November (2 birds) [DT]. Maximum of 110 on 16<sup>th</sup> September [PR/DT].

**House Martin** (Hirondelle de fenêtre) *Delichon urbicum* E M

Fairly common passage migrant in spring and autumn. Small numbers noted irregularly throughout the summer.

First recorded on 14<sup>th</sup> April [DT]. Last sighting on 12<sup>th</sup> October [DT].

In spring 1-10 birds noted regularly up to 13<sup>th</sup> May.

An individual apparently migrating north-east flew over the Cascade early in the morning on 19<sup>th</sup> June [DT].

Small numbers noted in autumn from 12<sup>th</sup> August - 12<sup>th</sup> October, with a maximum of 38 on 29<sup>th</sup> September [PR/DT].

**Meadow Pipit** (Pipit farlouse) *Anthus pratensis* M

A fairly common passage migrant in spring and (especially) autumn.

Recorded exceptionally in winter: 2, 5<sup>th</sup> February [DT] , 3, 6<sup>th</sup> February [PR] , 2, 9<sup>th</sup> February [PR] - 1, 8<sup>th</sup> December [CF/DT] , 1, 15<sup>th</sup> December [PR].

The appearance of the birds on 5<sup>th</sup> February followed overnight snow.

Observed in spring from 13<sup>th</sup> March – 22<sup>nd</sup> April, with a maximum of 58 on 14<sup>th</sup> April [DT].

Absent in summer. First noted in autumn on 6<sup>th</sup> September. Small numbers observed irregularly thereafter until 21<sup>st</sup> October, with a feeble peak of 15 on 5<sup>th</sup> October [PR].

**Tree Pipit** (Pipit des arbres) *Anthus trivialis* M

Reasonably common passage migrant in spring and autumn.

First recorded in spring on 5<sup>th</sup> April [DT]. Observed regularly thereafter until 7<sup>th</sup> May. Notable fall during the misty morning of 28<sup>th</sup> April when at least 12 birds were found on site [DT].

First noted in autumn on 13<sup>th</sup> August. Small numbers (1-5 birds) noted fairly regularly up to 29<sup>th</sup> September [DT].

See Appendix II.

**Tawny Pipit** (Pipit rousseline) *Anthus campestris* M

Rare passage migrant. 1 observation in early autumn.

1, 18<sup>th</sup> August [DT].

The bird was seen and heard flying south-west over the Coffee Dome early in the morning.

**White Wagtail** (Bergeronnette grise) *Motacilla alba* M

A fairly common passage migrant in spring and autumn.

First reported in spring on 3<sup>rd</sup> March [DT]. Small numbers noted regularly thereafter until 13<sup>th</sup> April, with a maximum of 17 on 22<sup>nd</sup> March.

Absent in summer. Noted in autumn from 29<sup>th</sup> September – 31<sup>st</sup> October with a maximum of 62 on 5<sup>th</sup> October [PR].

**Blue-headed Wagtail** (Bergeronnette printanière) *Motacilla flava flava* M

Passage migrant noted in spring and autumn.

First reported in spring on 7<sup>th</sup> April [DT]. Small numbers noted on 7 further dates until 3<sup>rd</sup> May.

Observed for the first time in autumn on 18<sup>th</sup> August [DT]. Up to 13 birds noted on 7 further dates up to and including 11<sup>th</sup> September.

**Grey Wagtail** (Bergeronnette des ruisseaux) *Motacilla cinerea* S M

A rather uncommon and irregular non-breeding resident and passage migrant.

As usual observed mainly during the second half of the year. No records between 12<sup>th</sup> March – 24<sup>th</sup> August.

Small numbers or (more often) singletons noted fairly regularly during the last 4 months of the year.

Birds apparently migrating south noted on 6 dates from 13<sup>th</sup> September – 5<sup>th</sup> October.

**Winter Wren** (Troglodyte mignon) *Troglodytes troglodytes* S

Common breeding resident – usually 1-4 birds seen or heard daily throughout the year.

**Dunnoek** (Accenteur mouchet) *Prunella modularis* S M

Common breeding resident – 1-4 birds seen almost daily.

As usual many birds singing during the second half of February and in March, making them much easier to see (far more discreet in summer).

**European Robin** (Rougegorge familier) *Erithacus rubecula* S M

Common breeding resident – 1-4 birds seen almost daily.

Like the preceding species, discreet during the breeding season. 1 juvenile observed on 1<sup>st</sup> September [DT]. Several singing birds noted on 6<sup>th</sup> November [PR].

Daily totals bolstered slightly in early spring and autumn by migrants (for example, 8 on 20<sup>th</sup> October).

**Common Nightingale** (Rossignol philomèle) *Luscinia megarhynchos* E M

Fewer observations in comparison with 2011. 1-2 breeding pairs estimated.

First recorded in spring on 19<sup>th</sup> April, an individual singing at its traditional site on the Sentier des Vergers, just opposite the house at 108 rue de Quatre Ruelles [DT].

Thereafter 1-2 individuals seen or heard quite regularly until 24<sup>th</sup> May [JA/PR]. “At Least” 2 singing birds present on 27<sup>th</sup> April [DT].

As usual, autumn migrants noted on site from mid-August. Recorded on 4 dates: 1, 13<sup>th</sup> August – 2, 18<sup>th</sup> August – 2, 27<sup>th</sup> August – 1, 1<sup>st</sup> September [DT].

**Black Redstart** (Rougequeue noir) *Phoenicurus ochruros* M

Rather irregular and uncommon migrant. Absent during the summer (although breeding in the immediate vicinity of the park). 1-6 birds noted on 14 dates (5 in spring and 9 in autumn). In autumn observed most often atop the buildings to the north-east (and outside of) the park.

3, 15<sup>th</sup> March [PR/DT] - 1, 16<sup>th</sup> March [DT] - 1, 22<sup>nd</sup> March [DT] - 1, 29<sup>th</sup> March [PR] - 1, 13<sup>th</sup> April [DT].

6, 16<sup>th</sup> September [DT] - 1, 19<sup>th</sup> September [PR] - 2, 22<sup>nd</sup> September [PR/DT] - 2, 29<sup>th</sup> and 30<sup>th</sup> September [DT] - 1, 5<sup>th</sup> October [PR] - 1, 20<sup>th</sup> and 21<sup>st</sup> October [DT] - 2, 22<sup>nd</sup> October [OL].

**Common Redstart** (Rougequeue à front blanc) *Phoenicurus phoenicurus* M

Uncommon migrant. Observed on 11 dates (4 in spring and 7 in autumn).

1, 7<sup>th</sup> April [DT] - 1, 8<sup>th</sup> April [DT] - 1, 28<sup>th</sup> April - 1, 24<sup>th</sup> May [JA].

1, 18<sup>th</sup> August [DT] - 1, 24<sup>th</sup> August [DT] - 2, 1<sup>st</sup> September [PR/DT] - 1, 6<sup>th</sup> September [DT] - 1, 13<sup>th</sup> September [DT] - 1, 19<sup>th</sup> September [PR] - 1, 23<sup>rd</sup> September [CF/DT].

**Common Stonechat** (Traquet pâtre) *Saxicola rubicola* M

Uncommon passage migrant. Observed on 3 dates (1 in spring and 2 in autumn).

1, 15<sup>th</sup> March [PR/DT].

1, 16<sup>th</sup> September [PR/DT] - 1, 19<sup>th</sup> October [OL].

**Ring Ouzel** (Merle à plastron) *Turdus torquatus* M

Uncommon but regular migrant. 1-4 birds noted on 8 dates (6 in spring and 2 in autumn).

1, 29<sup>th</sup> March [PR] - 1, 11<sup>th</sup> April [DT] - 1, 28<sup>th</sup> April [DT] - 1, 30<sup>th</sup> April [DT] - 4, 3<sup>rd</sup> May [DT] - 2, 5<sup>th</sup> May [DT].

1, 28<sup>th</sup> September [PR] - 1, 19<sup>th</sup> October [OL].

**Common Blackbird** (Merle noir) *Turdus merula* S M

Common breeding resident. Small numbers (usually 1-5 birds) seen daily. Higher daily totals noted sometimes in late autumn and winter (for example, 25 on 29<sup>th</sup> January [DT]).

**Fieldfare** (Grive litorne) *Turdus pilaris* H M

Uncommon migrant in late autumn, spring and in winter. Noted (especially flying over the park) in small numbers on 9 dates from 9<sup>th</sup> February - 9<sup>th</sup> April. Observed on 6 dates in autumn.

1, 9<sup>th</sup> February - 2, 17<sup>th</sup> February - 5, 20<sup>th</sup> February - 1, 11<sup>th</sup> March - 2, 15<sup>th</sup> March - 2, 21<sup>st</sup> March - 1, 22<sup>nd</sup> March - 4, 29<sup>th</sup> March - 2, 9<sup>th</sup> April.

17, 27<sup>th</sup> October - 3, 28<sup>th</sup> October - 2, 6<sup>th</sup> November - 1, 7<sup>th</sup> November - 20, 10<sup>th</sup> November - 8, 11<sup>th</sup> November.

**Song Thrush** (Grive musicienne) *Turdus philomelos* S M

Rather discreet but common breeding resident - at least 3 breeding pairs estimated. 1-5 birds usually seen or heard daily. Passage migrants increase the numbers observed in spring and autumn.

Singing noted on 28<sup>th</sup> January [PR]. Several singing birds on site in early March. A notable fall on 3<sup>rd</sup> March with at least 15 birds on site [DT]. Up to 45 noted daily in late March/early April.

More discreet in summer. Juvenile noted the 1<sup>st</sup> June [OL]. Compared to previous years rather feeble numbers in autumn (migration noted especially from 5<sup>th</sup>-30<sup>th</sup> October).

**Redwing** (Grive mauvis) *Turdus iliacus* H M

Reasonably common migrant in spring and autumn - observed irregularly in small numbers in winter.

1-10 birds present at the beginning of the year. Migration noted in spring on 16 dates from 20<sup>th</sup> February - 22<sup>nd</sup> March, with a maximum of 28 on 22<sup>nd</sup> March. As was the case last year, a solitary

individual noted on site in April (on 11<sup>th</sup> [DT]).

First observed in autumn on 13<sup>th</sup> October. Migrants noted thereafter up to 7<sup>th</sup> November with a maximum of 32 on 20<sup>th</sup> October. Not recorded in December.

**Mistle Thrush** (Grive draine) *Turdus viscivorus* S M

Reasonably common resident with 1-3 birds seen almost daily in early spring, autumn and (especially) winter. Breeding probable either in or very close to the park. Very discreet and seldomly observed in late spring and summer (almost absent between late March – late September).

Small numbers observed on migration: in spring noted on 7 dates from 12<sup>th</sup> – 29<sup>th</sup> March. In autumn 1-5 birds noted flying over the park towards the south on 3 occasions between 13<sup>th</sup> – 22<sup>nd</sup> October.

**Grasshopper Warbler** (Locustelle tachetée) *Locustella naevia* M

Rare migrant. 1 observation in spring.

1, 11<sup>th</sup> April [DT].

The bird sang early in the morning, just a few metres from the Mare Perchée (from the same bush where a singing individual was found in spring 2010).

**Eurasian Reed-Warbler** (Rousserolle effarvatte) *Acrocephalus scirpaceus* E M

Another disappointing year: as in 2011 a. scirpaceus was more discreet than usual. 1-2 birds observed irregularly in spring at the Mare Perchée (although just as often observed away from it). Breeding possible but not confirmed.

First recorded in spring on 27<sup>th</sup> April [DT]. Observed for the last time on 22<sup>nd</sup> October [PR].

Not recorded from 23<sup>rd</sup> May – 7<sup>th</sup> July. Autumn migrants noted on 5 dates:  
1, 5<sup>th</sup> September [DT], 1, 13<sup>th</sup> October [DT], 1, 20<sup>th</sup> & 21<sup>st</sup> October [DT], 2, 22<sup>nd</sup> October [PR].

The severe cutting of the reed bed at the Mare Perchée by the authorities in early spring is no doubt having a detrimental effect on the well-being of this species at Beaumonts.

**Marsh Warbler** (Rousserolle verderolle) *Acrocephalus palustris* E M

Very uncommon passage migrant. Recorded on 3 dates in spring.

1, 24<sup>th</sup> May [PR] - 1, 30<sup>th</sup> May [DT] - 1, 17<sup>th</sup> June [PR/DT].

The last two observations might concern the same individual; the birds sang from the tall weeds at the Compost, just a few metres from the Cascade.

Voir annexe II.

**Sedge Warbler** (Phragmite des joncs) *Acrocephalus schoenobaenus* M

Rather rare passage migrant. 1 observation in spring.

1, 28<sup>th</sup> April [DT].

The bird was found at dawn in the reed bed at the Mare Perchée. It was one of many migrants which had apparently fallen overnight.

**Garden Warbler** (Fauvette des jardins) *Sylvia borin* E M

Reasonably common summer visitor, breeding on site. 1-2 breeding pairs estimated.

First reported in spring on 1<sup>st</sup> May [DT]. Heard singing regularly until 7<sup>th</sup> July. Discreet and seldomly observed in summer – only one observation in August (14<sup>th</sup> [DT]).

Noted twice in September: 1, 7<sup>th</sup> [PR] , and 1, 15<sup>th</sup> [DT].

**Blackcap** (Fauvette à tête noire) *Sylvia atricapilla* H E M

Common summer visitor and passage migrant – seen or heard daily between 16<sup>th</sup> March – 24<sup>th</sup> October (the last observation of the year). As in 2011 (and contrary to preceeding years) relatively few birds on site in late autumn.

Noted once in winter at the beginning of the year (1 on 28<sup>th</sup> January [PR]). First noted in spring on 1<sup>st</sup> March [PR]. At least 20 birds on site (including many singing males) on 19<sup>th</sup> April [DT].

**Lesser Whitethroat** (Fauvette babillarde) *Sylvia curruca* E M

It would seem that this attractive species is no longer breeding on site. Nevertheless an improvement on 2011 with 6 records in spring (none in autumn). Noted singing from the Savanna on several dates.

1, 28<sup>th</sup> April [DT] – 1, 29<sup>th</sup> April [DT] – 1, 1<sup>st</sup> May [DT] – 1, 4<sup>th</sup> May [DT] – 1, 11<sup>th</sup> May [DT] – 1, 28<sup>th</sup> May [PR].

**Common Whitethroat** (Fauvette grisette) *Sylvia communis* E

A fairly common summer visitor, seen or heard daily. A rather poor year with notably fewer birds on site than in 2011. 1-2 breeding pairs estimated.

Arrival on site in spring later than usual – first reported on 27<sup>th</sup> April [PR]. Last observed in autumn on 8<sup>th</sup> September [PR/DT].

**Melodious Warbler** (Hypolaïs polyglotte) *Hippolais polyglotta* E M

Fairly common summer visitor, usually breeding on site. A poor year – breeding possible but not confirmed.

First reported in spring on 4<sup>th</sup> May [DT]. Seen or heard fairly regularly thereafter until 2<sup>nd</sup> June [PR]. Not reported after this date, except for a presumed migrant found in the Petite Prairie early in the morning on 13<sup>th</sup> August [DT].

**Willow Warbler** (Pouillot fitis) *Phylloscopus trochilus* E M

A rather uncommon non-breeding species noted in spring, late summer and autumn.

First recorded in spring on 27<sup>th</sup> March [DT]. Not observed thereafter until 25<sup>th</sup> April. 1-4 birds then noted daily until 4<sup>th</sup> May.



Not recorded from 5<sup>th</sup> May-1<sup>st</sup> August.

1 singing on 18<sup>th</sup> August [DT]. Noted regularly at the end of August and the beginning of September. Last recorded on 14<sup>th</sup> September [DT].

**Wood Warbler** (Pouillot siffleur) *Phylloscopus sibilatrix* M

2 records in spring.

1, 28<sup>th</sup> April [DT] - 1, 24<sup>th</sup> May [PR].

The April bird was one of an impressive fall of migrants: visibly agitated it roamed around the Parc Mabille during the early morning, singing intermittently. The May bird was also singing – it was found along the Sentier des Vergers, in exactly the same place where the observer had found one the previous year.

**Common Chiffchaff** (Pouillot véloce) *Phylloscopus collybita* E M

Common summer visitor, seen daily. At least 5 breeding pairs estimated.

Present on site in winter at the beginning of the year: 1-2 birds noted from 1<sup>st</sup>-11<sup>th</sup> January [JA/PR/DT].

First recorded in spring on 9<sup>th</sup> March (song) [PR/DT]. Thereafter up to 10 birds noted daily throughout the spring and summer. Observed nest-building on 28<sup>th</sup> April [GP].

As in 2011 (and contrary to preceeding years), rather feeble presence in autumn (generally 1-6 birds noted daily in August-October).

Fewer birds in November: 1-2 observed irregularly up to 24<sup>th</sup> November. Reported once in December (1 on 24<sup>th</sup> [PR]).

**Goldcrest** (Roitelet huppé) *Regulus regulus* S M

Rather uncommon resident – breeding unconfirmed.

Small numbers (1-6 birds) at the beginning and the end of the year. Not reported from 19<sup>th</sup> March – 21<sup>st</sup> October.

**Firecrest** (Roitelet triple-bandeau) *Regulus ignicapillus* S M

Rather uncommon resident. Breeding possible but not confirmed.

1-3 birds present in winter at the beginning of the year – noted on 8 dates from 1<sup>st</sup> January – 29<sup>th</sup> February [JA/PR/DT]. A singing male observed on 9<sup>th</sup> March [PR] and 11<sup>th</sup> March [DT]. A singing bird noted in the Savanna on 1<sup>st</sup> May [DT].

Not reported from 1<sup>st</sup> May – 27<sup>th</sup> August.

Almost absent at the end of the year (noted on 3 dates during September – December).

**Spotted Flycatcher** (Gobemouche gris) *Muscicapa striata* M

Rather uncommon passage migrant in spring and autumn. Observed on 7 dates (4 in spring and 3 in

autumn)

2, 30<sup>th</sup> April [DT] - 1, 1<sup>st</sup> May [DT] - 1, 4<sup>th</sup> May [DT] - 1, 18<sup>th</sup> May [DT].

1, 18<sup>th</sup> August [DT] - 1, 21<sup>st</sup> August [DT] - 1, 23<sup>rd</sup> August [DT].

**European Pied Flycatcher** (Gobemouche noir) *Ficedula hypoleuca* M

Passage migrant recorded on 13 dates (2 in spring and 11 in autumn)

1, 28<sup>th</sup> April [DT] - 1, 30<sup>th</sup> April [DT].

1, 13<sup>th</sup> August [DT] - 2, 14<sup>th</sup> August [DT] - 1, 15<sup>th</sup> August [DT] - 1, 17<sup>th</sup> August [PR] - 1, 18<sup>th</sup> August [DT] - 1, 31<sup>st</sup> August [DT] - 3, 1<sup>st</sup> September [PR/DT] - 1, 4<sup>th</sup> September [DT] - 1, 7<sup>th</sup> September [PR] - 3, 8<sup>th</sup> September [DT] - 1, 9<sup>th</sup> September [PR].

**Great Tit** (Mésange charbonnière) *Parus major* S M

Common breeding resident - usually 1-6 birds seen daily.

**Coal Tit** (Mésange noire) *Parus ater* H M

Scarce winter visitor and passage migrant. This was a good year: observed for the first time on 30<sup>th</sup> September [SC/DT]. 1-5 birds noted fairly regularly thereafter (especially in the northern section of the park) until the 8<sup>th</sup> December.

Voir annexe II.

**Eurasian Blue Tit** (Mésange bleue) *Parus caeruleus* S M

Common breeding resident, although slightly less numerous than p.major - usually 1-4 birds seen daily.

**Crested Tit** (Mésange huppée) *Parus cristatus* H M

Very uncommon. Recorded on 3 dates (1 in spring and 2 in autumn).

3, 4<sup>th</sup> March [SC/PR] - 1, 22<sup>nd</sup> October [PR] - 1, 7<sup>th</sup> November [PR].

The birds were observed among the conifers in the northern section of the park.

**Marsh Tit** (Mésange nonnette) *Parus palustris* S

A good year for this species which makes its return after an absence of almost 2 years. Noted on 11 dates at the end of the year, from 18<sup>th</sup> August - 10<sup>th</sup> November. An isolated pair, roaming independently of tit-flocks, was present at the end of August and the beginning of September [DT].

1, 18<sup>th</sup> August - 1, 23<sup>rd</sup> August - 1, 24<sup>th</sup> August - 2, 26<sup>th</sup> August - 2, 27<sup>th</sup> August - 2, 2<sup>nd</sup> September - 1, 8<sup>th</sup> September - 3+, 29<sup>th</sup> September - 1, 5<sup>th</sup> October - 1, 21<sup>st</sup> October - 1, 10<sup>th</sup> November.

**Long-tailed Tit** (Mésange à longue queue) *Aegithalos caudatus* S

Fairly common resident - 1 or 2 breeding pairs.

Up to 12 birds seen irregularly throughout the year. A pair observed constructing a nest at the Jean-Moulin Entrance on 3<sup>rd</sup> March [DT]. A nest found on 10<sup>th</sup> March at the Saudelier Entrance [PR]. Juveniles noted for the first time on 10<sup>th</sup> June [OL].

True to form, a caudatus was either very discreet or absent for a period in summer (no records between 1<sup>st</sup> June - 15<sup>th</sup> August).

**Eurasian Nuthatch** (Sittelle torchepot) *Sitta europaea* S

Inexplicably scarce at Beaumonts. A good year with 2 birds noted on several occasions towards the end of the year.

1, 29<sup>th</sup> January [PR] - 1, 3<sup>rd</sup> March [PR].

1-2 birds observed on 14 dates from 29<sup>th</sup> August (a pair regularly noted from 8<sup>th</sup>-23<sup>rd</sup> September [DT]).

1, 26<sup>th</sup> December [PR].

**Short-toed Treecreeper** (Grimpereau des jardins) *Certhia brachydactyla* S

Fairly common breeding resident (at least 2 pairs estimated). Singletons observed regularly throughout the year, although the species is more discreet in spring and early summer (especially from mid March - mid August).

**Common Magpie** (Pie bavarde) *Pica pica* S

Common breeding resident - usually 5-20 birds seen daily.

**Eurasian Jay** (Geai des chênes) *Garrulus glandarius* S M

Fairly common breeding resident - usually 1-3 birds seen daily.

Unlike 2011, visible migration noted in autumn: observed on 11 dates from 2<sup>nd</sup> September - 21<sup>st</sup> October, with a maximum of 16 on 15<sup>th</sup> September [PR/DT].

**Eurasian Jackdaw** (Choucas des tours) *Corvus monedula* H M

Uncommon. Recorded on 5 dates.

1, 2<sup>nd</sup> February [PR] - 5, 22<sup>nd</sup> February [PR] - 3, 7<sup>th</sup> March [DT].

c28, 13<sup>th</sup> October [DT] - 21, 21<sup>st</sup> October [PR/DT].

**Rook** (Corbeau freux) *Corvus frugilegus* M

A rather uncommon migrant. Records typically involve small, loose groups of less than 10 birds flying purposefully overhead. Recorded rather less frequently than in 2011, during the months of February, March, May, October and November.

Noted in spring on 9 dates between 2<sup>nd</sup> February - 7<sup>th</sup> May.

Observed in autumn on 9 dates between 7<sup>th</sup> October - 10<sup>th</sup> November.

**Carrion Crow** (Corneille noire) *Corvus corone* S

Common breeding resident. Usually between 1-10 birds noted daily.

Larger numbers occasionally present (for example, a flock of 25 on 21<sup>st</sup> October [DT]).

**European Starling** (Etourneau sansonnet) *Sturnus vulgaris* S M

Common resident, breeding inside the park. Small numbers observed daily.

Migration observed in spring between 29<sup>th</sup> February – 21<sup>st</sup> March. Noted on 7 dates with a maximum of 23 flying east on 9<sup>th</sup> March [DT].

Observed apparently migrating in autumn on 12 dates from 14<sup>th</sup> September – 6<sup>th</sup> November with a peak around the 20<sup>th</sup>-21<sup>st</sup> October (432 birds noted flying west on 20<sup>th</sup> [DT]).

**Eurasian Golden Oriole** (Loriot d'Europe) *Oriolus oriolus* M

1, 28<sup>th</sup> April [DT] - 1, 30<sup>th</sup> April [DT] - 1, 24<sup>th</sup> May [JA].

The bird present on 28<sup>th</sup> April was a superb singing male, and one of many migrants which had apparently fallen overnight.

**House Sparrow** (Moineau domestique) *Passer domesticus* S

Fairly common resident breeding near the park – usually 1-4 birds seen almost daily.

**Chaffinch** (Pinson des arbres) *Fringilla coelebs* S M

Fairly common in winter with small numbers seen daily. Discreet and rarely seen in summer (although a singing male was heard regularly in June and July).

Common passage migrant in early spring: noted flying northeast on 21 dates from 29<sup>th</sup> February – 14<sup>th</sup> April, with a maximum of 187 on 13<sup>th</sup> March [DT].

Migration noted at the end of autumn with average numbers flying southwest between 29<sup>th</sup> September – 11<sup>th</sup> November. Maximum of 164 on 19<sup>th</sup> October [OL].

**Brambling** (Pinson du nord) *Fringilla montifringilla* H M

Uncommon but fairly regular winter visitor and passage migrant. Apparently not present this year on site in winter. Migration noted in spring and autumn.

Just 2 records in spring: up to 12 birds noted on 2 dates in March (the 10<sup>th</sup> [DT] and 23<sup>rd</sup> [PR]).

In autumn noted for the first time on 19<sup>th</sup> October [OL]. Small numbers seen thereafter on 9 dates up to 11<sup>th</sup> November.

**Eurasian Linnet** (Linotte mélodieuse) *Carduelis cannabina* M

Fairly common migrant noted on passage in spring and autumn.

First recorded in spring on 11<sup>th</sup> March [SC/PR/DT]. Small numbers noted thereafter on 18 dates up to 12<sup>th</sup> May.

First seen in autumn (17 birds) on 5<sup>th</sup> October [PR]. Noted on 7 further dates up to 11<sup>th</sup> November.

**Common Redpoll** (Sizerin flammé) *Carduelis flammea* H M

Uncommon winter visitor and migrant.

Observed flying over the park on 3 dates (1 in spring and 2 in autumn).

1, 8<sup>th</sup> April [DT].

5, 21<sup>st</sup> October [DT] – 1, 27<sup>th</sup> October [DT].

**European Goldfinch** (Chardonneret élégant) *Carduelis carduelis* S M

Reasonably common resident, breeding in or near the park. Small numbers noted fairly regularly, although rarely seen in summer (only one report between 17<sup>th</sup> May – 29<sup>th</sup> September).

Present on site in winter – a flock of c25 birds noted regularly in November- December.

Active migration observed in spring and (especially) autumn: in spring 1-4 birds noted on 4 dates from 21<sup>st</sup> March – 13<sup>th</sup> April. In autumn noted on 14 dates from 30<sup>th</sup> September – 11<sup>th</sup> November with a maximum of 26 on 16<sup>th</sup> October [PR].

**European Greenfinch** (Verdier d'Europe) *Carduelis chloris* S M

Common resident breeding in or near the park. 1-6 birds noted daily.

**Eurasian Siskin** (Tarin des aulnes) *Carduelis spinus* H M

Not present on site in winter. Noted on migration in spring and autumn.

Small numbers observed in spring on 8 dates between 6<sup>th</sup> February (2, PR) – 17<sup>th</sup> March (1, DT).

Noted on 7 dates in autumn from 5<sup>th</sup> October (9, PR) – 6<sup>th</sup> November (3, PR/DT). Maximum of 28 on 13<sup>th</sup> October [DT].

**European Serin** (Serin cini) *Serinus serinus* S M

Reasonably common resident with 1-2 breeding pairs estimated in or very near the park. Small numbers (usually 1-2 birds) noted irregularly from the beginning of March. Irregular in winter: no records this year in January-February, although observed on site in December [DT].

Singing male noted for the first time on 10<sup>th</sup> March [DT].

Observed in active migration on just 2 occasions: 4, 14<sup>th</sup> March [DT] – 2, 5<sup>th</sup> October [PR].

**Eurasian Bullfinch** (Bouvreuil pivoine) *Pyrrhula pyrrhula* S

A discreet but reasonably common resident, breeding inside the park. Small numbers (1-5 birds) seen or heard regularly. Not reported in summer (between 28<sup>th</sup> May – 15<sup>th</sup> August). A juvenile present in the Savanna on 1<sup>st</sup> September [DT].

**Hawfinch** (Grosbec casse-noyaux) *Coccothraustes coccothraustes* H M

Uncommon winter visitor and passage migrant. Unlike last year, absent at the beginning of the year. In spring, 1-3 birds noted on northward migration on 5 dates from 21<sup>st</sup> February – 21<sup>st</sup> March.

For the past two years it has been suspected that the species might possibly breed in or near the park. As was the case in 2011, several interesting observations were made towards the end of spring [DT]:

27<sup>th</sup> April – a pair flew over the park from the north and landed in a tree in the Savanna. After approximately 1-2 minutes the male gave the female a peck, and both birds then took off towards the south.

7<sup>th</sup> May – an individual in local flight at 06h30.

10<sup>th</sup> May – an individual (apparently a female) perched atop a tree at the Coffee Dome at 08h35. She rested there for 3-4 minutes before taking off towards the Parc Mabilie.

17<sup>th</sup> May – 1 flying over the Cascade at 08h40.

19<sup>th</sup> June – a pair flying northwards over the Cascade in the early morning.

Not recorded from 19<sup>th</sup> June- 29<sup>th</sup> September (the first sighting of the autumn). Thereafter observed on just 2 occasions on migration: 3, 31<sup>st</sup> October [DT] – 2, 1<sup>st</sup> November [DT].

Noted twice in winter at the end of the year: 1 on site on 8<sup>th</sup> December [DT] and 2 flying south on 16<sup>th</sup> December [PR/DT].

### **Red Crossbill** (Bec-croisé des sapins) *Loxia curvisrostra* E M

Uncommon and irregular migrant. Noted flying northwards over the park on 3 dates (1 in summer and 2 in autumn).

2, 20<sup>th</sup> June [DT] – 4, 23<sup>rd</sup> September [DT] – 2, 23<sup>rd</sup> October [PR].

### **Reed Bunting** (Bruant des roseaux) *Emberiza schoeniclus* H M

Rather uncommon and irregular winter visitor. Recorded fairly often in spring and autumn.

1-7 birds noted regularly on migration in spring, often landing in the reed bed at the Mare Perchée. Observed on 18 dates from 29<sup>th</sup> February – 7<sup>th</sup> April.

As usual, absent at the end of spring and in summer ; no records between 8<sup>th</sup> April – 14<sup>th</sup> October.

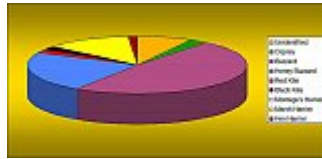
In autumn, small numbers noted on 13 dates from 14<sup>th</sup> October – 15<sup>th</sup> November.

Noted twice in December: 1, 16<sup>th</sup> [PR/DT] – 2, 30<sup>th</sup> [PR].

---

## Appendices

## Appendix I - Raptors at Parc des Beaumonts 2012 (210 individuals)



## Appendix II - Photos



***Ruddy Shelduck* : 15<sup>th</sup> March**



**Stonechat** : 15<sup>th</sup> March



***Common Tern* : 9<sup>th</sup> April**



***Mallard* : 23<sup>rd</sup> April**



***Tree Pipit*** : 29<sup>th</sup> April



***Torcol*** : 29<sup>th</sup> April



***Swifts*** : 10<sup>th</sup> May



***Purple Heron*** : 11<sup>th</sup> May



***Turtle Dove*** : 15<sup>th</sup> May





***Marsh Warbler*** : 30<sup>th</sup> May



***Honey Buzzard*** : 19<sup>th</sup> August



***Common Buzzard*** : 8<sup>th</sup> September



***Osprey*** : 23<sup>rd</sup> September



***Coal tit*** : 10<sup>th</sup> November

---